
 Seward-BU Seward TO BU System Name: AU-West			
Pos. No.	Latitude	Longitude	Fathoms
1	60 06.51 N	149 25.96 W	5
2	60 06.57 N	149 25.38 W	53
3	60 06.57 N	149 25.23 W	59
4	60 06.54 N	149 25.06 W	63
5	60 06.47 N	149 24.88 W	71
6	60 06.34 N	149 24.78 W	78
7	60 05.94 N	149 24.59 W	91
8	60 05.34 N	149 24.36 W	103
9	60 04.63 N	149 24.00 W	127
10	60 04.04 N	149 23.55 W	148
11	60 03.88 N	149 23.30 W	157
12	60 03.80 N	149 23.18 W	157
13	60 03.66 N	149 22.66 W	159
14	60 03.54 N	149 22.22 W	159
15	60 03.49 N	149 22.05 W	159
16	60 03.46 N	149 21.99 W	159
17	60 03.30 N	149 21.65 W	159
18	60 03.06 N	149 21.43 W	159
19	60 02.77 N	149 21.31 W	159
20	60 02.36 N	149 21.27 W	160
21	60 01.01 N	149 21.21 W	160
22	59 59.93 N	149 21.06 W	161
23	59 59.20 N	149 20.59 W	159
24	59 58.81 N	149 20.46 W	159
25	59 57.87 N	149 20.61 W	111
26	59 57.65 N	149 20.73 W	105
27	59 57.41 N	149 20.99 W	109
28	59 56.09 N	149 23.80 W	140
29	59 55.78 N	149 24.21 W	142
30	59 55.48 N	149 24.36 W	144
31	59 50.74 N	149 27.00 W	147
32	59 50.36 N	149 26.95 W	149
33	59 50.03 N	149 26.90 W	148

34	59 49.76 N	149 26.85 W	152
35	59 49.63 N	149 26.73 W	151
36	59 48.86 N	149 26.34 W	152
37	59 45.68 N	149 23.23 W	138
38	59 40.93 N	149 17.98 W	120
39	59 40.67 N	149 17.68 W	119
40	59 36.74 N	149 13.33 W	114
41	59 35.00 N	149 11.77 W	114
42	59 30.32 N	149 07.00 W	111
43	59 27.80 N	149 04.88 W	109
44	59 25.86 N	149 02.91 W	107
45	59 24.06 N	149 01.06 W	107
46	59 22.48 N	148 59.40 W	102
47	59 20.62 N	148 57.01 W	103
48	59 18.57 N	148 54.92 W	91
49	59 18.45 N	148 54.80 W	91
50	59 16.28 N	148 52.59 W	86
51	59 15.65 N	148 51.94 W	84
52	59 12.09 N	148 48.29 W	86
53	59 09.01 N	148 45.27 W	77
54	59 08.86 N	148 45.12 W	77
55	59 03.61 N	148 40.00 W	102
56	59 00.00 N	148 36.39 W	133
57	58 58.47 N	148 34.01 W	127
58	58 58.05 N	148 32.99 W	128
59	58 57.24 N	148 30.99 W	133
60	58 53.35 N	148 20.84 W	151
61	58 50.87 N	148 15.90 W	155
62	58 50.15 N	148 14.07 W	155
63	58 47.31 N	148 06.53 W	341
64	58 45.89 N	148 02.00 W	455
65	58 44.79 N	147 58.45 W	521
66	58 44.39 N	147 57.07 W	353
67	58 43.68 N	147 55.62 W	447
68	58 42.64 N	147 54.33 W	626
69	58 42.32 N	147 53.58 W	771
70	58 42.27 N	147 53.46 W	836
71	58 41.73 N	147 52.21 W	995
72	58 41.28 N	147 50.20 W	1089

 Seg. A Datum: WGS84 Whittier TO BU System Name: AU-East			
Pos. No.	Latitude	Longitude	Fathoms
1	59 50.50 N	148 03.60 W	78
2	59 45.75 N	148 16.60 W	85
3	59 45.20 N	148 17.65 W	85
4	59 44.56 N	148 18.32 W	85
5	59 43.80 N	148 19.15 W	88
6	59 42.00 N	148 20.00 W	95
7	59 39.00 N	148 20.00 W	100
8	59 26.60 N	148 11.00 W	110
9	59 24.60 N	148 08.80 W	98
10	59 22.70 N	148 06.34 W	89
11	59 17.66 N	148 00.33 W	107
12	59 14.00 N	147 56.00 W	100
13	59 01.84 N	147 33.74 W	487
14	59 01.74 N	147 33.60 W	495
15	59 00.90 N	147 32.00 W	557
16	58 57.24 N	147 26.65 W	779
17	58 53.16 N	147 20.69 W	1061

Attention Alaska South Central Mariners

Active FCC licensed telecommunications cables are located along the described routes providing vital communication links for Alaska

IF YOU SUSPECT YOUR GEAR or ANCHOR IS SNAGGED ON THE SEAFAST CABLE, PLEASE CONTACT GCI NETWORK OPERATIONS AT:

**1 888 442 8662
or
1 907 265 5555**

Attempting to recover gear snagged on submarine cables can be lethal!

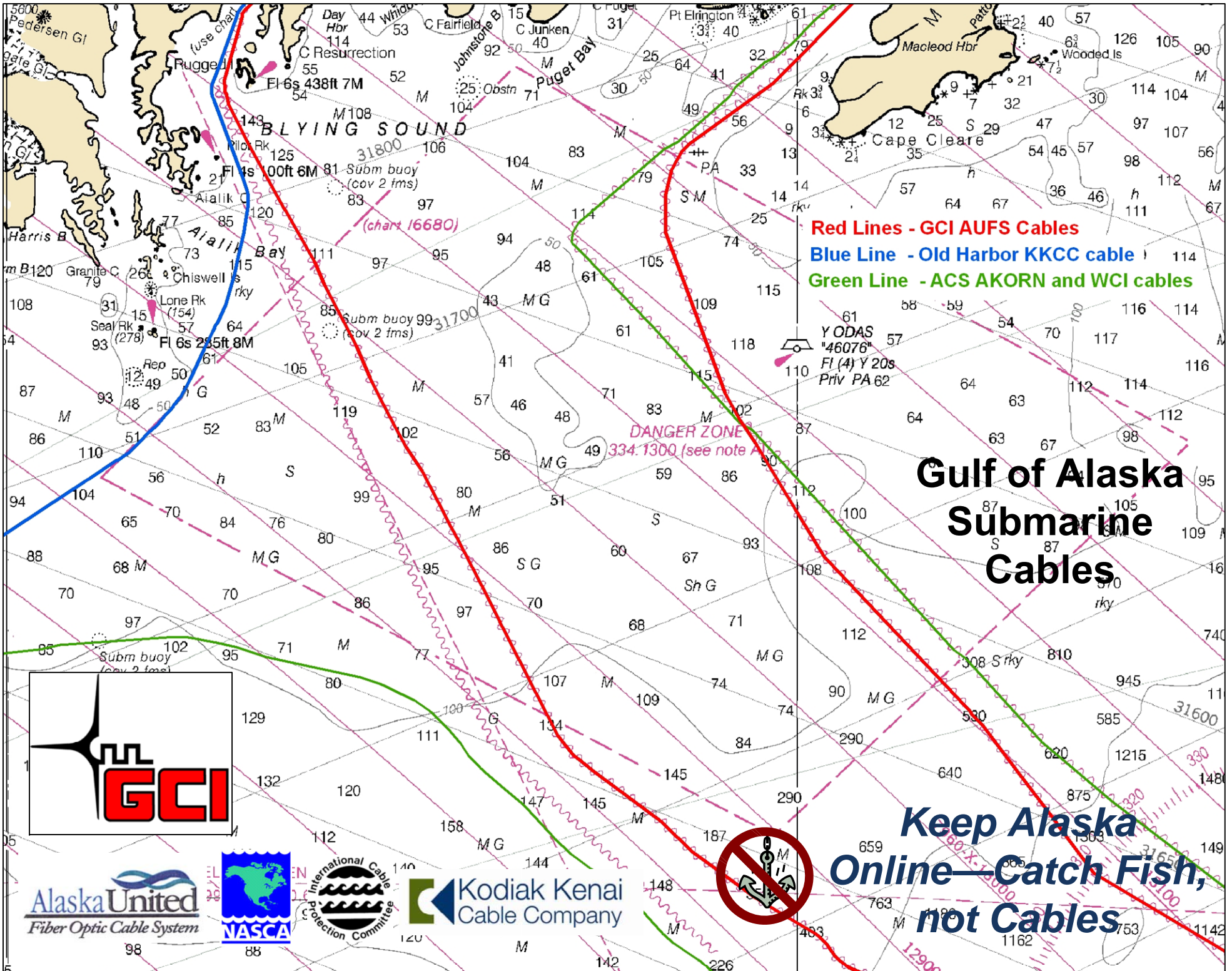
If your gear or anchor does snag something you think may be a cable, please don't try to lift it! After some initial slack is taken up, it may become extremely difficult to lift, and could threaten your vessel's stability. Furthermore, Alaskan submarine cables may carry over 2,000 volts DC



For Additional Information Contact:

Bruce Rein
5151 Fairbanks Street
Anchorage, AK 99503
Phone: 907 868 8580





Red Lines - GCI AUFS Cables

Blue Line - Old Harbor KKCC cable

Green Line - ACS AKORN and WCI cables

Gulf of Alaska Submarine Cables

DANGER ZONE
334.1300 (see note A)



**Keep Alaska
Online—Catch Fish,
not Cables**

