

GCI			
System Name: SEAFASST Schulze Cove to Sitka			
Pos. No.	Latitude	Longitude	Fathoms
1	N57 24.1580	W 135 36.3746	6
2	N57 24.0108	W 135 36.3498	8
3	N57 23.6843	W 135 36.1466	15
4	N57 23.3910	W 135 36.0741	25
5	N57 23.1507	W 135 35.9918	22
6	N57 22.9004	W 135 36.1337	41
7	N57 22.8083	W 135 36.7544	42
8	N57 22.9617	W 135 38.4555	63
9	N57 22.5907	W 135 40.8646	85
10	N57 22.5069	W 135 41.1102	61
11	N57 21.8070	W 135 42.2414	50
12	N57 21.7520	W 135 42.2384	52
13	N57 21.5748	W 135 42.2287	66
14	N57 21.0120	W 135 41.5416	38
15	N57 20.1681	W 135 40.7876	50
16	N57 18.7628	W 135 38.3307	44
17	N57 18.0796	W 135 36.8571	44
18	N57 17.2102	W 135 36.4488	16
19	N57 17.1566	W 135 36.3929	16
20	N57 16.7952	W 135 36.0163	10
21	N57 16.5534	W 135 35.6583	8
22	N57 16.5075	W 135 35.6067	9
23	N57 16.3298	W 135 35.5478	8
24	N57 16.2587	W 135 35.5055	7
25	N57 15.7786	W 135 34.9102	8
26	N57 15.0510	W 135 34.1285	11
27	N57 14.9735	W 135 33.8945	8
28	N57 14.8910	W 135 33.8099	6
29	N57 14.8262	W 135 33.8403	7
30	N57 14.7768	W 135 33.8464	7
31	N57 14.1787	W 135 33.5763	34
32	N57 13.9649	W 135 33.2751	38
33	N57 14.0425	W 135 32.4649	38
34	N57 13.6933	W 135 31.5292	34
35	N57 12.8806	W 135 30.3981	8
36	N57 12.6257	W 135 29.7556	7
37	N57 12.5339	W 135 29.5541	5
38	N57 12.4251	W 135 29.4188	5
39	N57 12.1847	W 135 29.2561	7
40	N57 11.2793	W 135 27.7747	14
41	N57 11.0454	W 135 27.4631	22
42	N57 10.6109	W 135 26.5755	44
43	N57 09.7026	W 135 25.8238	82
44	N57 08.4375	W 135 24.2159	90
45	N57 06.7883	W 135 25.1110	73
46	N57 05.8505	W 135 24.8419	65
47	N57 05.3975	W 135 23.9626	31
48	N57 05.3896	W 135 23.5497	11
49	N57 05.4400	W 135 23.3700	4

GCI			
System Name: SEAFASST Angoon to Sergius Narrows			
Pos. No.	Latitude	Longitude	Fathoms
1	N57 30.0800	W 134 35.1100	8
2	N57 30.0998	W 134 35.8943	37
3	N57 30.3171	W 134 36.5326	42
4	N57 30.2712	W 134 38.3294	279
5	N57 26.8559	W 134 46.7582	385
6	N57 26.7245	W 134 49.9000	109
7	N57 26.7702	W 134 50.0845	101
8	N57 26.9669	W 134 50.8788	112
9	N57 27.0586	W 134 52.5692	168
10	N57 26.9192	W 134 53.5935	174
11	N57 26.7159	W 134 57.2012	174
12	N57 26.7864	W 134 59.8719	167
13	N57 26.4483	W 135 02.5619	158
14	N57 27.4554	W 135 06.8968	138
15	N57 31.1436	W 135 13.8110	134
16	N57 33.1382	W 135 18.3084	126
17	N57 35.0483	W 135 25.2608	131
18	N57 35.1687	W 135 26.4224	115
19	N57 35.1277	W 135 27.2357	118
20	N57 34.7621	W 135 28.2637	63
21	N57 33.8500	W 135 29.8400	45
22	N57 33.3541	W 135 31.4963	44
23	N57 32.8972	W 135 32.3223	44
24	N57 30.9920	W 135 33.9114	36
25	N57 30.8985	W 135 33.8324	36
26	N57 29.9000	W 135 32.9900	33
27	N57 28.7900	W 135 32.5300	32
28	N57 27.8571	W 135 32.7099	28
29	N57 27.5450	W 135 32.2082	22
30	N57 27.4445	W 135 32.1621	22
31	N57 27.1685	W 135 32.3272	22
32	N57 27.0884	W 135 32.5484	22
33	N57 27.0257	W 135 33.5729	33
34	N57 26.9409	W 135 33.9289	30
35	N57 26.5404	W 135 34.6620	22
36	N57 26.2177	W 135 34.7260	24
37	N57 25.9243	W 135 34.7301	28
38	N57 25.4346	W 135 35.2430	26
39	N57 25.3404	W 135 35.7445	30
40	N57 24.9641	W 135 35.9280	30
41	N57 24.5130	W 135 36.7118	20
42	N57 24.4128	W 135 36.7523	22
43	N57 24.3300	W 135 36.6700	13

GCI			
System Name: SEAFASST Angoon to Hawk Inlet			
Pos. No.	Latitude	Longitude	Fathom
1	N57 30.0490	W 134 35.1450	8
2	N57 30.1334	W 134 35.9115	36
3	N57 30.4400	W 134 36.5052	44
4	N57 30.7645	W 134 38.4246	279
5	N57 31.2075	W 134 38.7885	276
6	N57 32.4409	W 134 39.8026	264
7	N57 33.5388	W 134 41.1111	197
8	N57 34.0795	W 134 42.2318	225
9	N57 36.4018	W 134 42.5242	207
10	N57 38.3778	W 134 45.5125	309
11	N57 40.4307	W 134 45.9256	297
12	N57 47.7546	W 134 48.1201	274
13	N57 48.6045	W 134 47.8721	260
14	N57 50.5123	W 134 46.5700	273
15	N57 54.7796	W 134 47.6186	296
16	N57 56.6864	W 134 48.4818	271
17	N57 57.9795	W 134 49.0560	279
18	N57 59.4963	W 134 48.2229	106
19	N58 00.1099	W 134 48.7335	156
20	N58 00.9913	W 134 48.9711	124
21	N58 01.6894	W 134 49.7804	157
22	N58 04.4717	W 134 50.7856	227
23	N58 04.9160	W 134 50.3840	205
24	N58 05.0345	W 134 49.5433	140
25	N58 05.1940	W 134 48.4113	54
26	N58 05.2925	W 134 46.6017	10
27	N58 05.3720	W 134 46.3903	11
28	N58 05.5105	W 134 46.3208	11
29	N58 05.7870	W 134 46.4405	15
30	N58 05.8482	W 134 46.4482	14
31	N58 05.9009	W 134 46.4389	6
32	N58 06.1039	W 134 46.5013	11
33	N58 06.3395	W 134 46.3637	24
34	N58 07.2583	W 134 45.7052	40
35	N58 07.4410	W 134 45.2250	2

Attention Alaska Southeast Mariners

Active FCC licensed
telecommunications cables are
located along the described routes
providing vital communication links
for Alaska

**IF YOU SUSPECT YOUR GEAR
or ANCHOR IS SNAGGED ON
THE SEAFASST CABLE,
PLEASE CONTACT GCI
NETWORK OPERATIONS AT:**

**1 888 442 8662
or
1 907 265 5555**

**Attempting to recover gear
snagged on submarine
cables can be lethal!**

*If your gear or anchor does snag something
you think may be a cable, please don't try to
lift it! After some initial slack is taken up, it
may become extremely difficult to lift, and
could threaten your vessel's stability.*

*Furthermore, Alaskan submarine cables may
carry over 2,000 volts DC*



For Additional Information Contact:

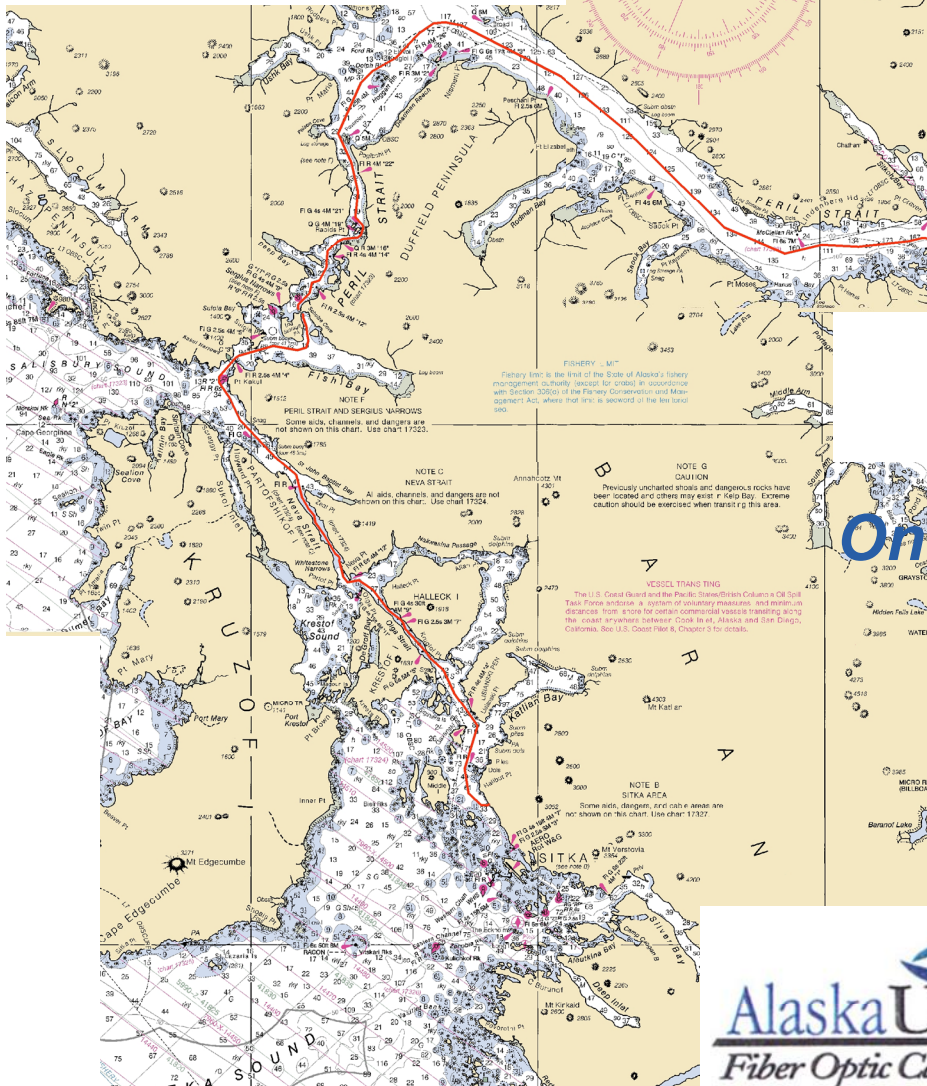
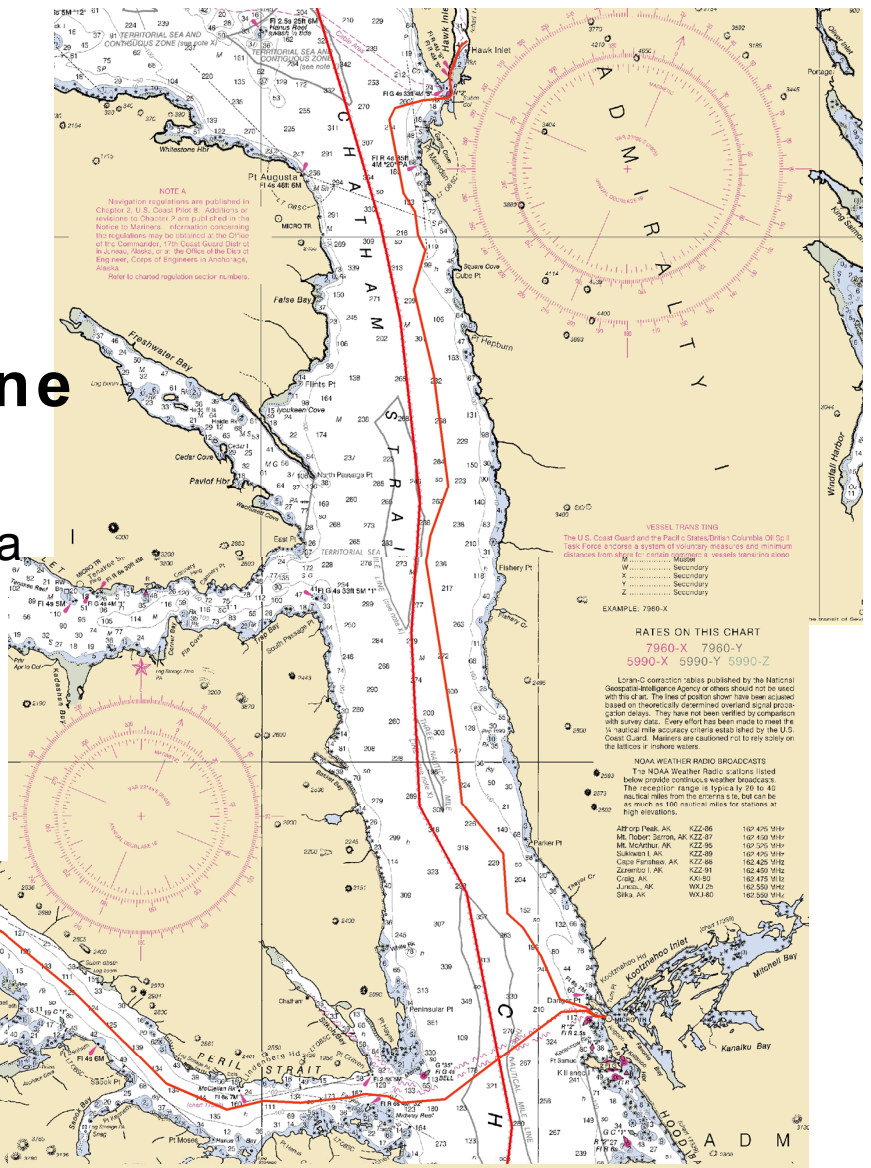
Bruce Rein
5151 Fairbanks Street
Anchorage, AK 99503
Phone: 907 868 8580





SEAFAST Submarine Cable System

Hawk Inlet, Angoon, Sitka



Keep Alaska Online—Catch Fish, not Cables

